

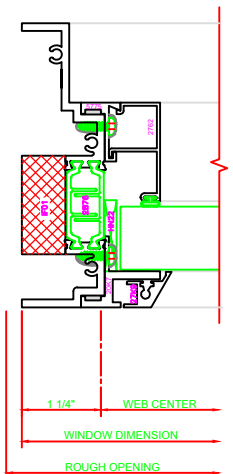
130	HEAD
	SERIES: 450G
	CASEMENT IN
	4-BAR ARMS

434	JAMB
	SERIES: 450G
	CASEMENT IN

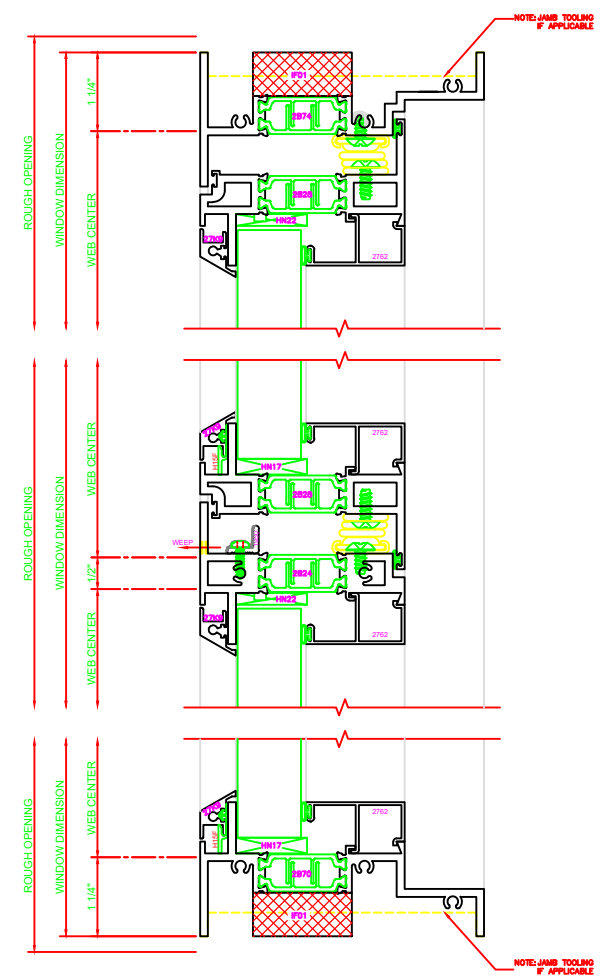
531	MEETING RAIL
	SERIES: 450G
	C.I./FIXED
	4-BAR ARMS

200	SILL
	SERIES: 450G
	FIXED

433	JAMB
	SERIES: 450G
	CASEMENT IN
	4-BAR ARMS

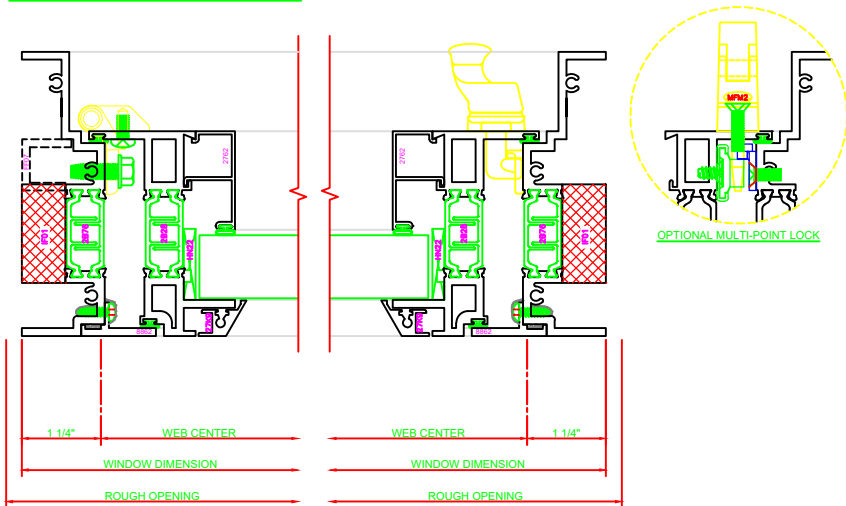


402	JAMB
	SERIES: 450G
	FIXED



4-BAR ARMS BUTT HINGE

13 **ERECTOR NOTE:**
THE HINGED JAMB FRAME SHALL BE INSTALLED PLUMB. ALL HINGES SHALL BE SECURELY BLOCKED AND ANCHORED TO THE CONDITION THROUGH THE HINGES OR AS CLOSE AS POSSIBLE TO THE HINGES.



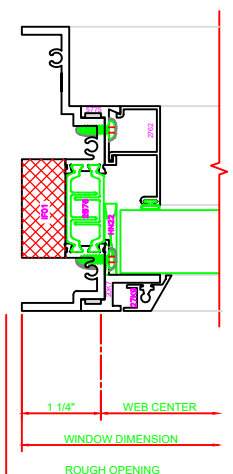
131	HEAD
	SERIES: 450G
	CASEMENT IN
	BUTT HINGE

434	JAMB
	SERIES: 450G
	CASEMENT IN

533	MEETING RAIL
	SERIES: 450G
	C.I./FIXED
	BUTT HINGE

200	SILL
	SERIES: 450G
	FIXED

435	JAMB
	SERIES: 450G
	CASEMENT IN
	BUTT HINGE



402	JAMB
	SERIES: 450G
	FIXED

